

CTS-800

Palm-size veterinary ultrasound

Compact design & easy operation

Water proof for outdoor operation

Gravity sensor for layout change

Livestock pregnancy detection

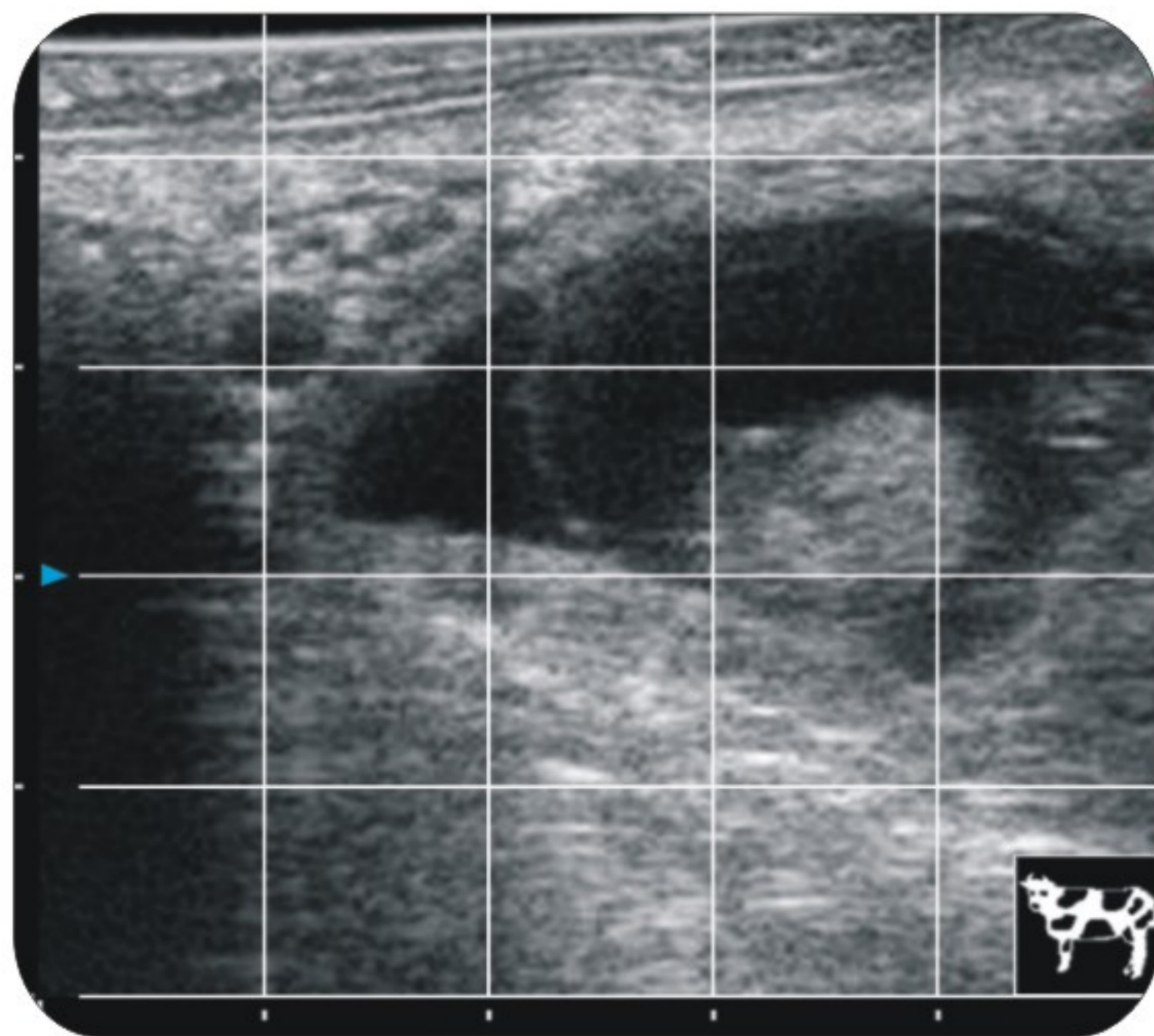


See the future
SIUI



CTS-800

Palm-size veterinary ultrasound



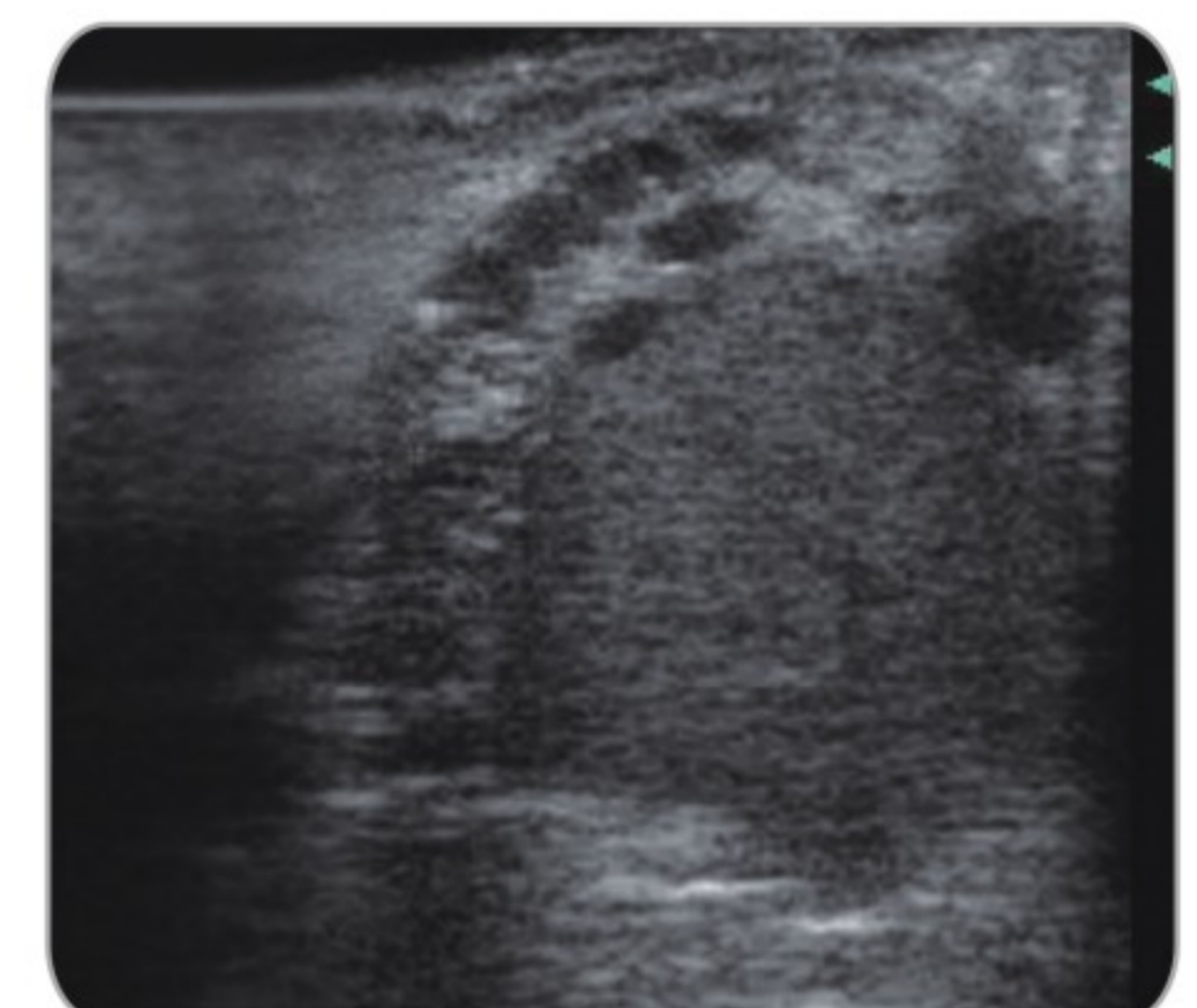
Grid for Estimation



Different Layout

Specifications:

- Monitor: 7-inch LCD monitor
- Weight: 0.8 kg
- Environmental Rating: Ip64 (main unit)
IP67 (probe head)
- Probe: L65/5.0 MHz linear rectal probe (Standard)
L50/7.5MHz linear rectal probe (Optional)
R20/5.0 MHz micro convex probe (Optional)
R60/3.5 MHz convex probe (Optional)
- Battery: 2.5-3 hours operating time
- Display Mode: B、2B、ZOOM B、B/M、M
- Depth: Up to 250mm
- B Gain: 0~100
- Image Storage: 256 frames
- Cine Loop: 256 frames
- Image Layout: Gravity sensor for layout change (transverse/vertical)
- Measurement: Distance, area, circumference, volume, angle, heart rate
- Software & Report: Backfat, eyerib area, Rump fat and reproductive



SIUI

Shantou Institute of Ultrasonic Instruments Co., Ltd.

Add: #77, Jinsha Road, Shantou 515041, Guangdong, China

Tel: +86-754-88250150 Fax: +86-754-88251499

E-mail: siui@siui.com Website: <http://www.siui.com>

Specifications and appearance are subject to change without prior notice.

DCY2.782.EN.CTS-800. CY/7A01