



S6 LED

Expert in comfortable scaling

product details

S6 LED

New Era for Scaling

Expert in comfortable scaling



Ultrasonic root canal treatment

Rapid preparation, root canal orifice locating, removal of foreign body in root canal, endodontic irrigation, root canal retreatment, supragingival scaling and periodontal treatment.

Compatible with more than 70 kinds of DTE tips.



ED3D

Modification of the pulp cavity



ED12D

Locate root canal orifice



ED62

Minimally invasive irrigation



ED6

Removal of instrument fractures



Smart touch system



Clear control panel display,
ultrasensitive touch control.
Waterproof design.

Real-time frequency tracking

According to the features of different tips, conduct real-time monitoring and automatically output matching vibrating frequency, so as to ensure that tips work under ideal conditions.



Detachable handpiece

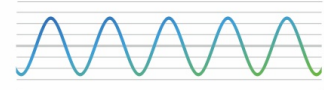
Adopt latest handpiece sealing technique,
making it able to be autoclaved.
Patients feel more comfortable during treatment.



Sine-wave Drive

Avoid stimulation caused by instantaneous current output.

Bring patients with comfortable treatment.
Embody comfortable scaling.



Root canal treatment

Endodontic irrigation



For removal of calcification and bad fillings in root canal



For removal of calcification at root canal orifice and top 1/3 of root canal



Locate the root canal orifice



Diamond-coated ball head
Locate root canal orifice with security, accuracy and efficiency

Root canal retreatment
Removal of foreign body



ED6 ED7

Special material (ED6, ED7)
Thin, flexible, good conductivity to ultrasound



ED6

For removal of foreign body at bottom 1/3 of root canal



ED7

For removal of foreign body at top 1/3 of root canal



ED14

For removal of foreign body and instrument fractures (stainless steel) in root canal



ED15

For removal of temporary cement and instrument fracture (stainless steel) in root canal

Supragingival scaling



GD4



GD5



GD6



GD12

Implant maintenance



PD90



PD40



PD41



PD42

Subgingival scaling



PD1



PD3



PD4



PD3D



PD7



PD12

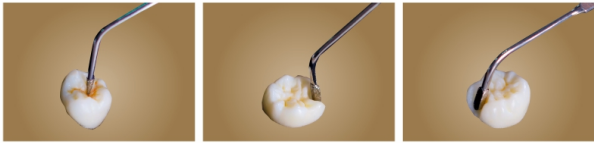


PD2R



PD2L

Cavity preparation



GD30
For preparation between
pits and fissures

GD31
For the preparation
of mesioocclusion cavity

GD32
For the preparation
of distal cavity

